

Les Gemmaux de France Panels in The Corning Museum of Glass collection

Kelley Jo Elliott (elliottkj@cmog.org)

June 6, 2012

1)

93.3.1

Mere et Enfant

Gift of Pittsburgh Plate Glass Co.

Pablo Picasso (artist), Roger Malherbe-Navarre (maker), Les Gemmaux de France (studio)

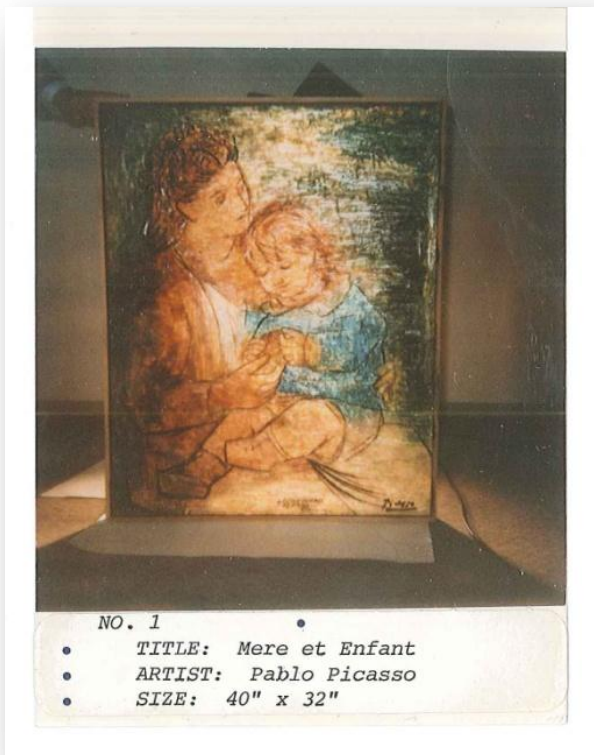
France

about 1954

Lightbox: H: 114.4 cm, W: 94.5 cm, D: 26 cm; Panel: 40" x 32"

Gemmail panel in wood frame/ light box. Designed and signed by Pablo Picasso; technique invented by artist Jean Crotti (1870-1958); panel assembled by "gemmaux" in the studio of Roger Malherbe-Navarre. Multicolored pieces of glass; layered, fused. Included in a 1957 exposé called "Gemmaux Night" at the Casino du Palm Beach at Cannes. Included in the "First American Exhibit of 'Gemmaux de France'" in 1959. Included in the 1962 "Masterpieces in Glass" traveling exhibition by Pittsburgh Plate Glass Co.

Condition in 1993: *One piece lying loose on bottom inner framing between two signatures.*



2)
93.3.2

La Petit Aquarium

Gift of Pittsburgh Plate Glass Co.

Georges Braque (artist), Roger Malherbe-Navarre (maker), Les Gemmaux de France (studio)

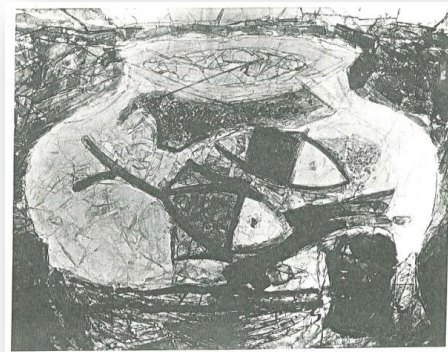
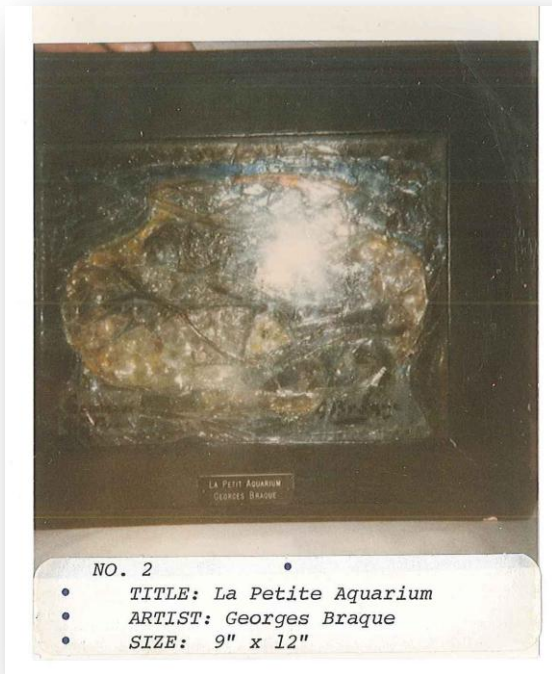
France

about 1954

Lightbox: H: 38.1-36.4 cm, W: 46.7-44.6 cm, D: 26.1 cm; Panel: 9" x 12"

Gemmail panel in wood frame/ light box. Designed and signed by Georges Braque; technique invented by artist Jean Crotti (1870-1958); panel assembled by "gemmaists" in the studio of Roger Malherbe-Navarre. Multicolored pieces of glass; layered, fused. Included in a 1957 exposé called "Gemmaux Night" at the Casino du Palm Peach at Cannes. Included in the 1962 "Masterpieces in Glass" traveling exhibition by Pittsburgh Plate Glass Co.

Condition in 1993: *Diagonally cracked two times at upper left corner.*



3)
93.3.3

Bouquette

Gift of Pittsburgh Plate Glass Co.

Suzanne Duchamp (artist), Roger Malherbe-Navarre (maker), Les Gemmaux de France (studio)

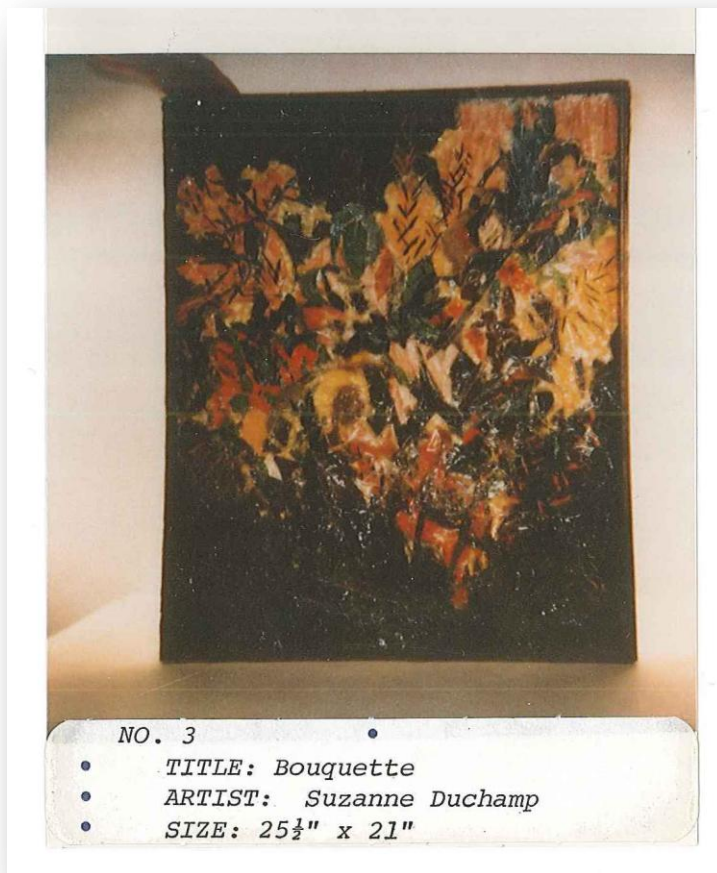
France

about 1954

Lightbox: H: 78.3 cm, W: 66.6 cm, D: 24.3 cm; Panel: 25 1/2" x 21"

Gemmail panel in wood frame/ light box. Design by Suzanne Duchamp; technique invented by artist Jean Crotti (1870-1958); panel assembled by "gemmists" in the studio of Roger Malherbe-Navarre. Multicolored pieces of glass; layered, fused. Included in the 1962 "Masterpieces in Glass" traveling exhibition by Pittsburgh Plate Glass Co.

Condition in 1993: *Intact. Signature piece off.*



4)
93.3.4

Orphee aux Feuillages

Gift of Pittsburgh Plate Glass Co.

Jean Cocteau (artist), Roger Malherbe-Navarre (maker), Les Gemmaux de France (studio)

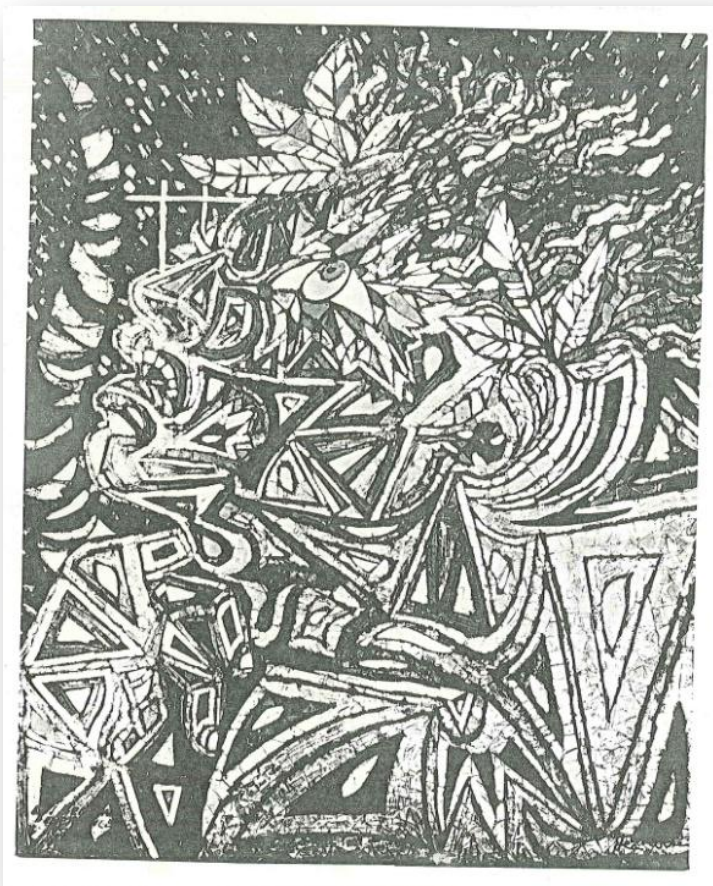
France

about 1954

Lightbox: H: 113.5 cm, W: 94.7 cm, D: 24.1 cm; Panel: 39" x 32"

Gemmail panel in wood frame/ light box. Design by Jean Cocteau; technique invented by artist Jean Crotti (1870-1958); panel assembled by "gemmists" in the studio of Roger Malherbe-Navarre. Multicolored pieces of glass; layered, fused. Included in a 1957 exposé called "Gemmaux Night" at the Casino du Palm Beach at Cannes. Included in the "First American Exhibit of 'Gemmaux de France'" in 1959. Included in the 1962 "Masterpieces in Glass" traveling exhibition by Pittsburgh Plate Glass Co.

Condition in 1993: Intact. Cover glass diagonally cracked at upper left corner.



5)
93.3.5

La Bouteille de Pernod

Gift of Pittsburgh Plate Glass Co.

Pablo Picasso (artist), Roger Malherbe-Navarre (maker), Les Gemmaux de France (studio)

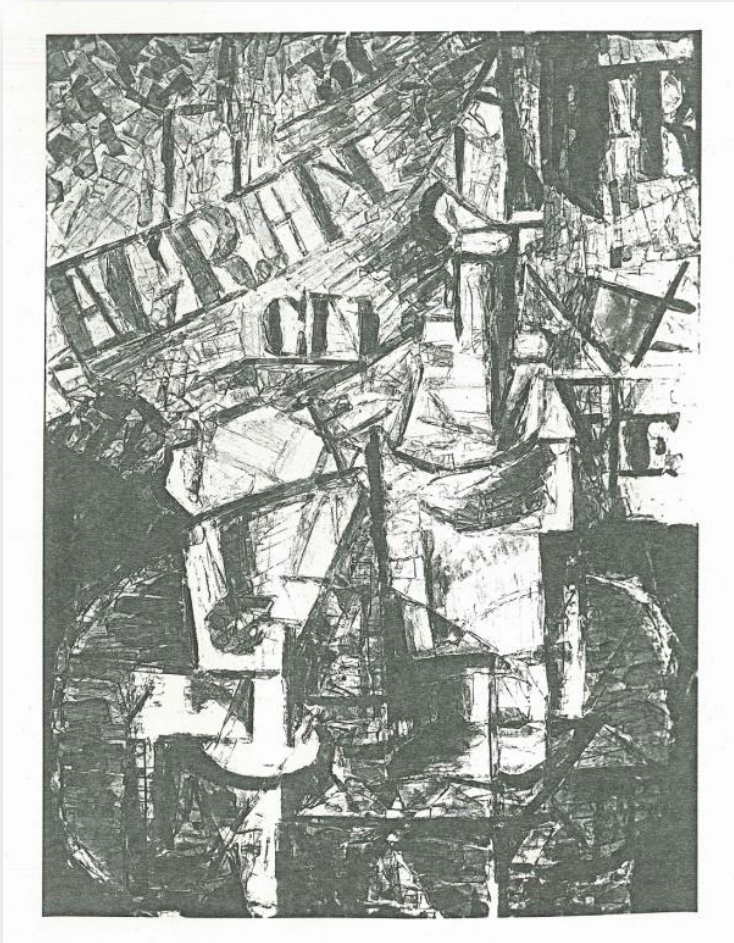
France

about 1954

Lightbox: H: 59.7 cm, W: 46.8 cm, D: 24.7 cm; Panel: H: 19" W: 13"

Gemmail panel in wood frame/ light box. Design by Pablo Picasso; technique invented by artist Jean Crotti (1870-1958); panel assembled by "gemmists" in the studio of Roger Malherbe-Navarre. Multicolored pieces of glass; layered, fused. Included in a 1957 exposé called "Gemmaux Night" at the Casino du Palm Beach at Cannes. Included in the 1962 "Masterpieces in Glass" traveling exhibition by Pittsburgh Plate Glass Co.

Condition in 1993: *Intact.*



6)
93.3.6

Paysage sous Marin

Gift of Pittsburgh Plate Glass Co.

Michele Katz Lanoir (artist), Roger Malherbe-Navarre (maker), Les Gemmaux de France (studio)

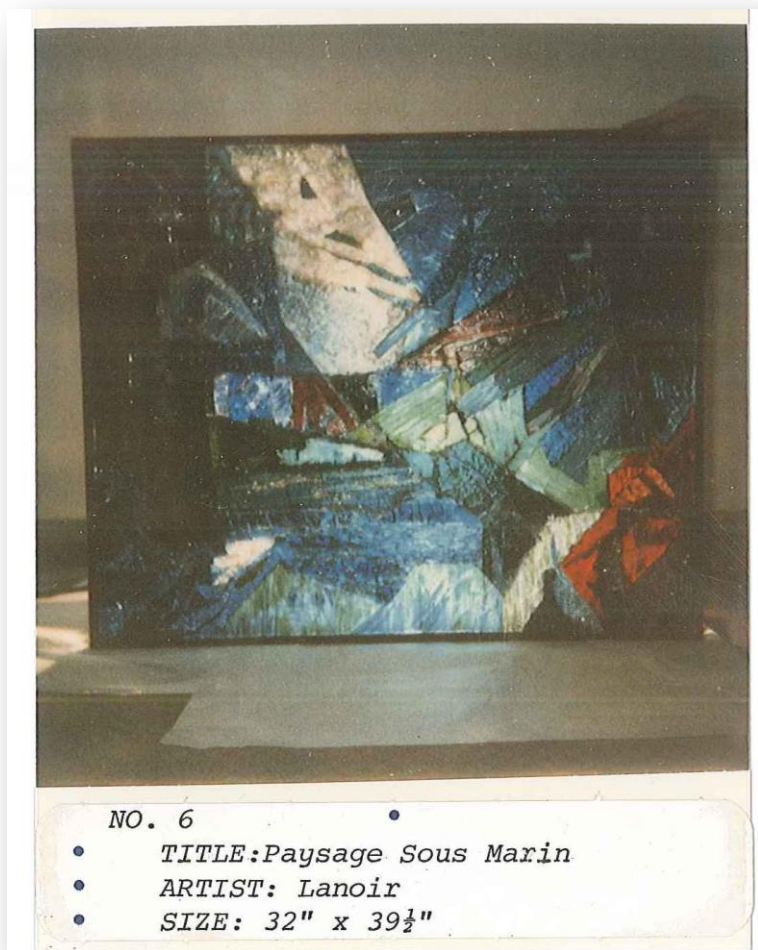
France

about 1954

Lightbox: H: 95 cm, W: 113.7 cm, D: 24.9 cm; Panel: 32"H x 39.5"W

Gemmail panel in wood frame/ light box. Designed and signed by Michele Katz Lanoir; technique invented by artist Jean Crotti (1870-1958); panel assembled by "gemmaists" in the studio of Roger Malherbe-Navarre. Multicolored pieces of glass; layered, fused. Included in the 1962 "Masterpieces in Glass" traveling exhibition by Pittsburgh Plate Glass Co.

Condition in 1993: Loose piece of glass on bottom right inner framing.



7)
93.3.7

Les Etoiles

Gift of Pittsburgh Plate Glass Co.

Lise Driout (artist), Roger Malherbe-Navarre (maker), Les Gemmaux de France (studio)

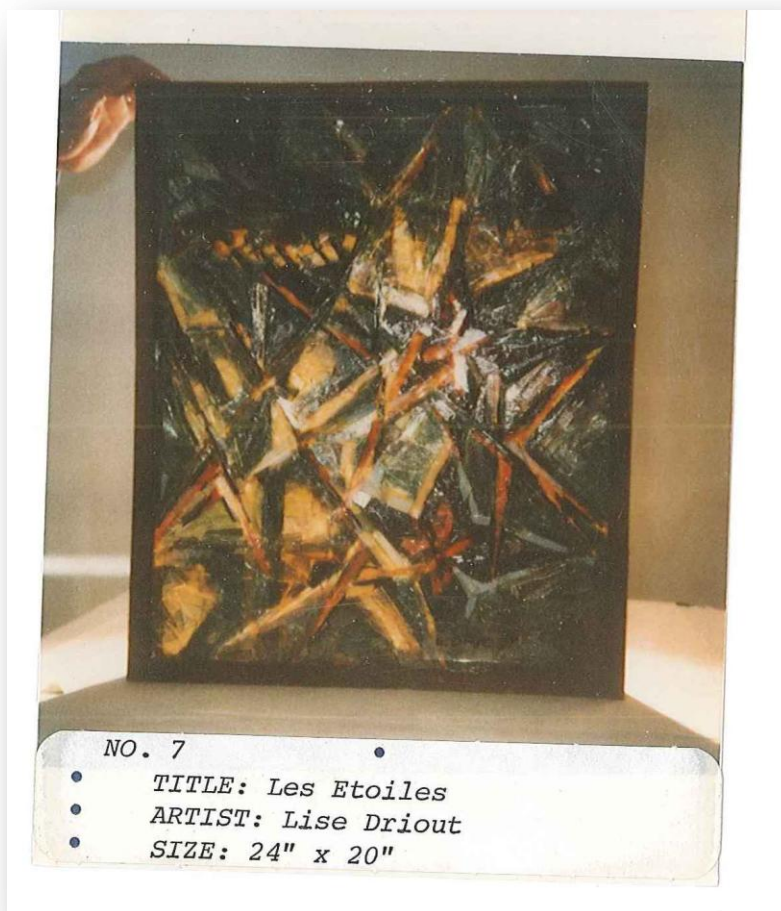
France

about 1954

Lightbox: H: 76.5 cm, W: 65.7 cm, D: 25.5 cm; Panel: 24" x 20"

Gemmail panel in wood frame/ light box. Designed and signed by Lise Driout; technique invented by artist Jean Crotti (1870-1958); panel assembled by "gemmaux" in the studio of Roger Malherbe-Navarre. Multicolored pieces of glass; layered, fused. Included in the 1962 "Masterpieces in Glass" traveling exhibition by Pittsburgh Plate Glass Co.

Condition in 1993: Pieces missing about 7" down from top of frame in center. Enamel/ glue flaking and lifting, especially at upper half. Chips of glass on lower left of inner frame.



8)
93.3.8

Passe, Present, Avenir

Gift of Pittsburgh Plate Glass Co.

Jean Crotti (artist), Roger Malherbe-Navarre (maker), Les Gemmaux de France (studio)

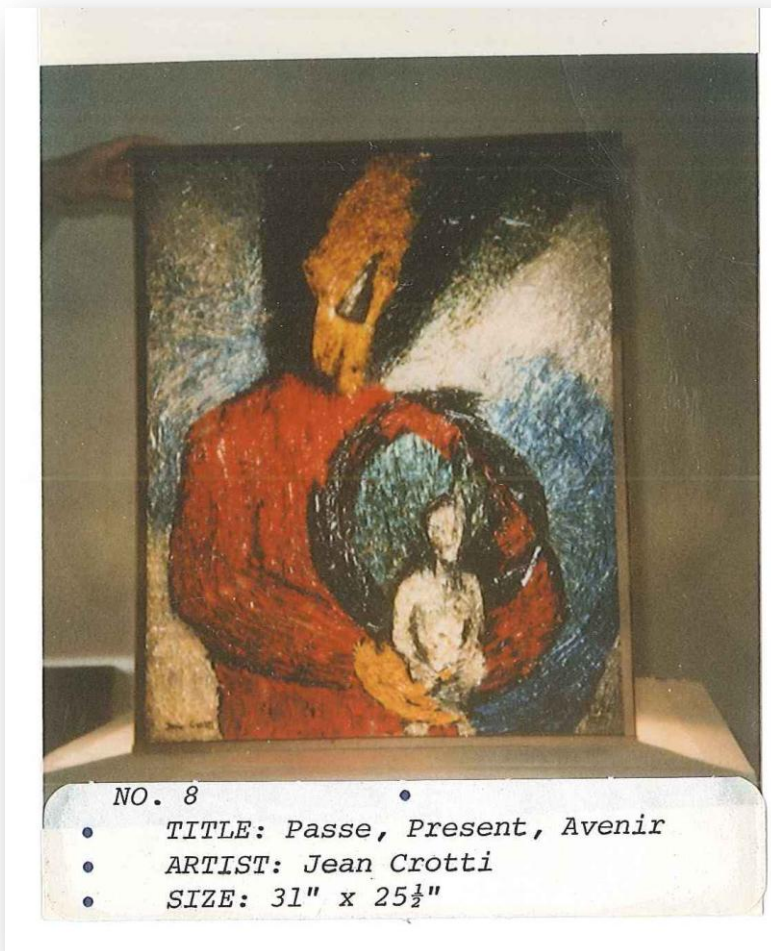
France

about 1954

Lightbox: H: 94 cm, W: 78.5 cm, D: 25.8 cm; Panel: 31" x 25 1/2"

Gemmail panel in wood frame/ light box. Designed and signed by Jean Crotti; technique invented by artist Jean Crotti (1870-1958); panel assembled by "gemmaux" in the studio of Roger Malherbe-Navarre. Multicolored pieces of glass; layered, fused. Included in the "First American Exhibit of 'Gemmaux de France'" in 1959. Included in the 1962 "Masterpieces in Glass" traveling exhibition by Pittsburgh Plate Glass Co.

Condition in 1993: *Intact.*



9)
93.3.9

Pont de Grenelle

Gift of Pittsburgh Plate Glass Co.

Louis Gilis (artist), Roger Malherbe-Navarre (maker), Les Gemmaux de France (studio)

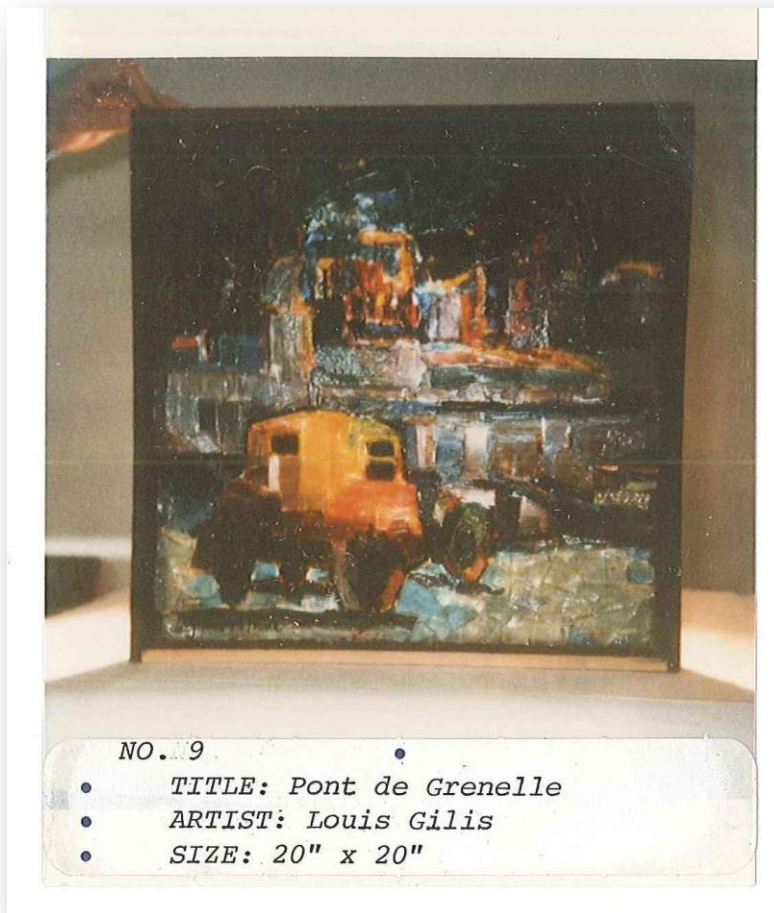
France

about 1959

Lightbox: H: 65.6 cm, W: 65.3 cm, D: 26.2 cm; Panel: 20" x 20"

Gemmail panel in wood frame/ light box. Design by Louis Gilis; technique invented by artist Jean Crotti (1870-1958); panel assembled by "gemmists" in the studio of Roger Malherbe-Navarre. This artist was winner of the "Prix du Gemmail" in 1959 for his work titled 'Jean d'Arc'. Multicolored pieces of glass; layered, fused. Included in the "First American Exhibit of 'Gemmaux de France'" in 1959. Included in the 1962 "Masterpieces in Glass" traveling exhibition by Pittsburgh Plate Glass Co.

Condition in 1993: *Intact.*



10)

93.3.10

Le Torse Rose

Gift of Pittsburgh Plate Glass Co.

Pablo Picasso (artist), Roger Malherbe-Navarre (maker), Les Gemmaux de France (studio)

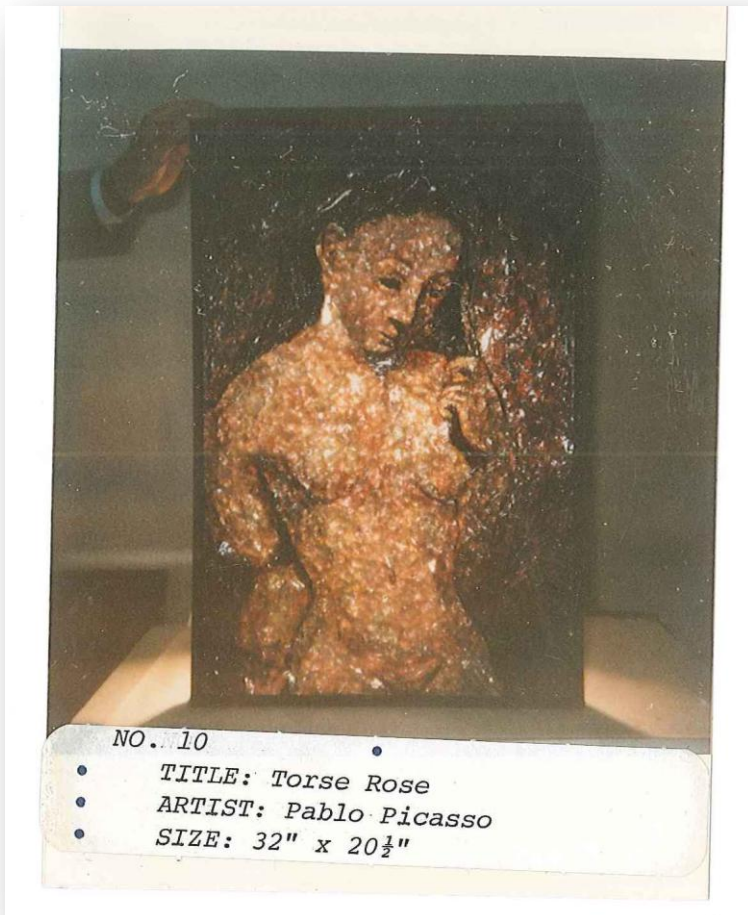
France

about 1954

Lightbox: H: 94 cm, W: 67.2 cm, D: 25.7 cm Panel: 32" x 20 1/2"

Gemmail panel in wood frame/ light box. Designed and signed by Pablo Picasso; technique invented by artist Jean Crotti (1870-1958); panel assembled by "gemmists" in the studio of Roger Malherbe-Navarre. Multicolored pieces of glass; layered, fused. Included in a 1957 exposé called "Gemmaux Night" at the Casino du Palm Beach at Cannes. Included in the "First American Exhibit of 'Gemmaux de France'" in 1959. Included in the 1962 "Masterpieces in Glass" traveling exhibition by Pittsburgh Plate Glass Co.

Condition in 1993: 4 pieces broken off



11)

93.3.11

Jeanne d'Arc

Gift of Pittsburgh Plate Glass Co.

Louis Gilis (artist), Roger Malherbe-Navarre (maker), Les Gemmaux de France (studio)

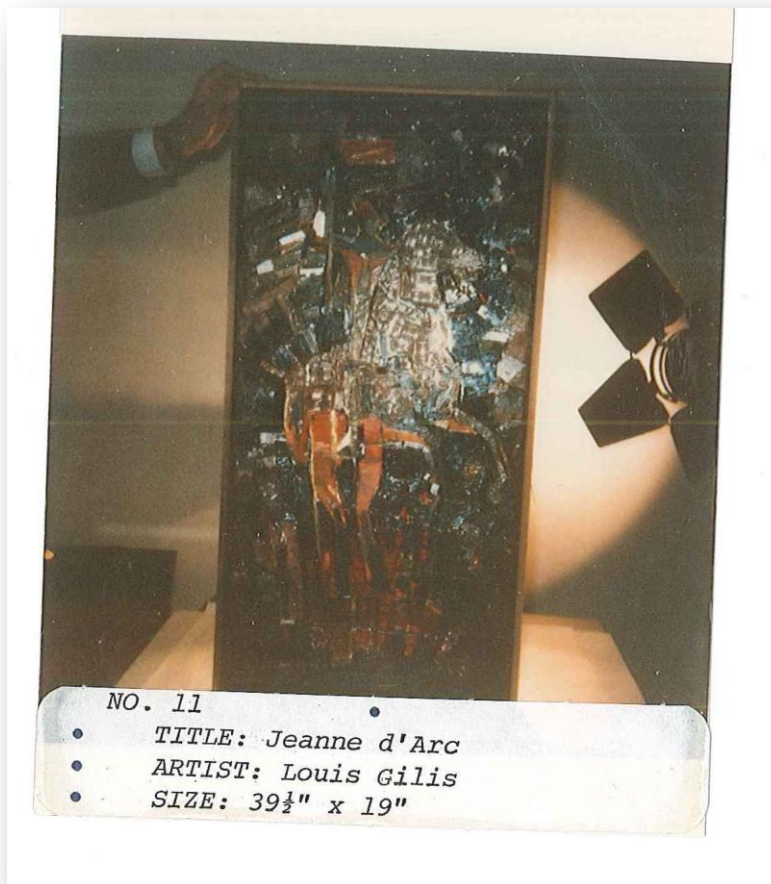
France

1959

Lightbox: H: 114.5 cm, W: 64.1 cm, D: 25.8 cm; Panel: 39 1/2' x 19"

Gemmail panel in wood frame/ light box. Designed and signed by Louis Gilis; technique invented by artist Jean Crotti (1870-1958); panel assembled by "gemmists" in the studio of Roger Malherbe-Navarre. Multicolored pieces of glass; layered, fused. This artist and piece was winner of the "Prix du Gemmail" in 1959. Included in the "First American Exhibit of 'Gemmaux de France'" in 1959. Included in the 1962 "Masterpieces in Glass" traveling exhibition by Pittsburgh Plate Glass Co.

Condition in 1993: 4 loose pieces. Pieces lifting and flaking "enamel/ adhesive" over all. Two small pieces laying on bottom inner framing, one piece leaning against glass cover.



12)

93.3.12

Voiles Heureuses

Gift of Pittsburgh Plate Glass Co.

Danielle d'Humes (artist), Roger Malherbe-Navarre (maker), Les Gemmaux de France (studio)

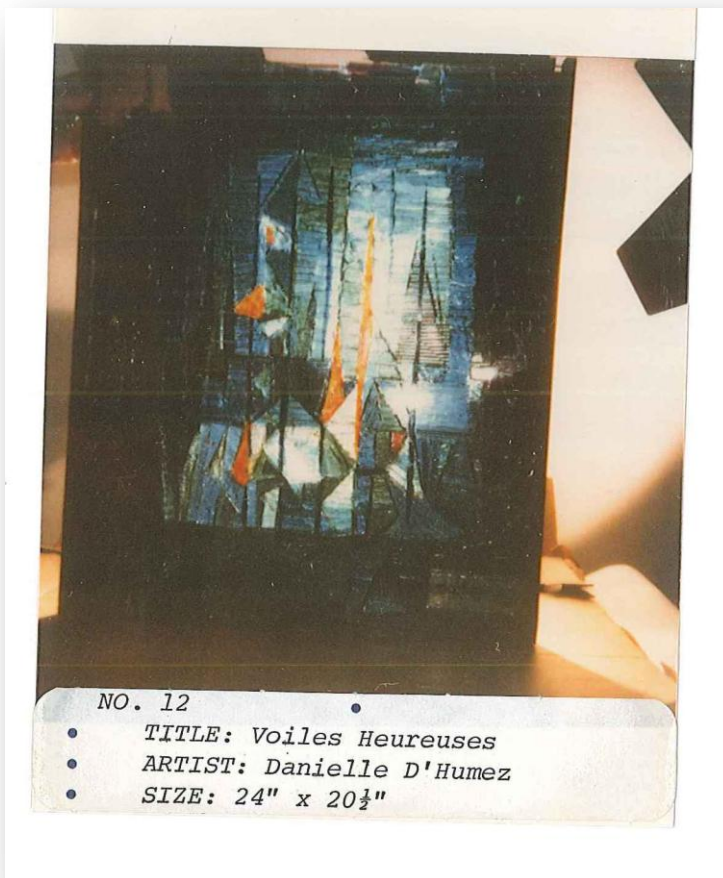
France

about 1957

H: 64 cm, W: 52.8 cm, D: 4.3 cm

Gemmail panel in wood frame. Designed and signed by Danielle d'Humez; technique invented by artist Jean Crotti (1870-1958); panel assembled by "gemmists" in the studio of Roger Malherbe-Navarre. Multicolored pieces of glass; layered, fused. Danielle d'Humes was winner of the first "Prix du Gemmail" in 1957 for her gemmail work called Voiles (uncertain if this is the same work that won). Included in the "First American Exhibit of 'Gemmaux de France'" in 1959. Included in the 1962 Masterpieces in Glass traveling exhibition by Pittsburgh Plate Glass Co.

Condition in 1993: No light box. Frame broken with new wood at top horizontal. Tape around all sides. Glass broken on left edge measuring 22" long and 3" wide. Loose pieces of glass. Loose "adhesive". Loose pieces came with panel.



13)

93.3.13

Jeux d'Enfants

Gift of Pittsburgh Plate Glass Co.

Dominique Dalozo (artist), Roger Malherbe-Navarre (maker), Les Gemmaux de France (studio)

France

about 1954

Lightbox: H: 108.5 cm, W: 88 cm, D: 26.5 cm; Panel: 37" x 28 1/2"

Gemmail panel in wood frame/ light box. Designed and signed by Dominique Dalozo; technique invented by artist Jean Crotti (1870-1958); panel assembled by "gemmaux" in the studio of Roger Malherbe-Navarre. Multicolored pieces of glass; layered, fused. This piece was part of the "First American Exhibit of 'Gemmaux de France'" in 1959. Included in the 1962 "Masterpieces in Glass" traveling exhibition by Pittsburgh Plate Glass Co.

Condition in 1993: 5 pieces loose including signature piece.



14)

93.3.14

Pecheuse

Gift of Pittsburgh Plate Glass Co.

J. M. Vernon (artist), Roger Malherbe-Navarre (maker), Les Gemmaux de France (studio)

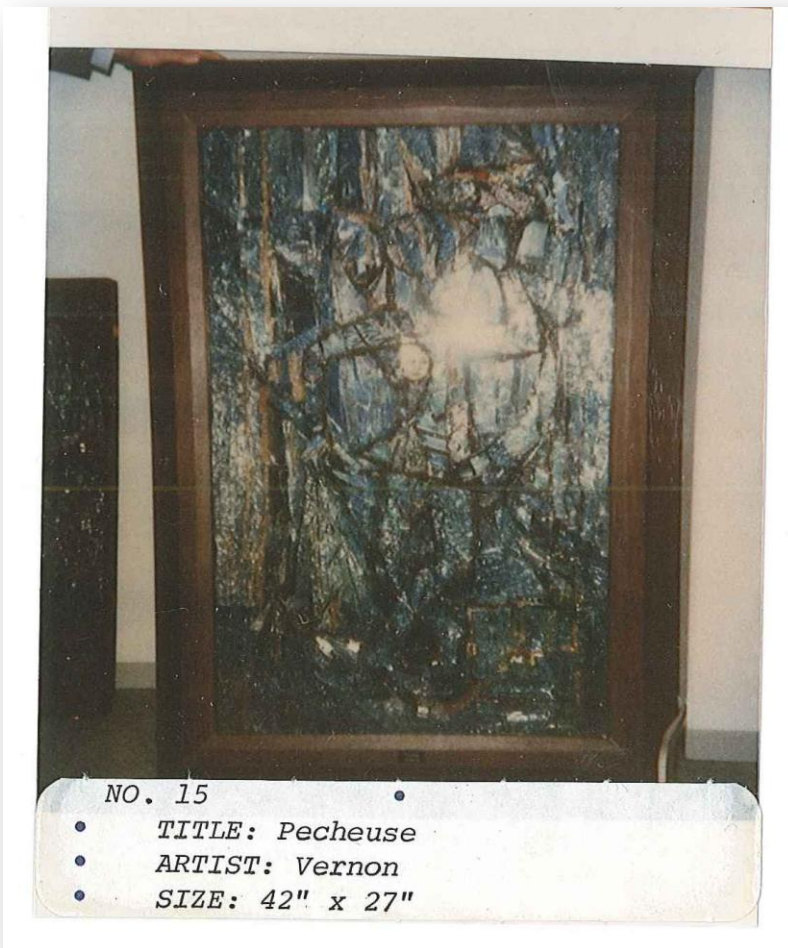
France

about 1954

Lightbox: H: 121.4 cm, W: 85.4 cm, D: 26 cm; Panel: 42" x 27"

Gemmail panel in wood frame/ light box. Designed and signed by J.M. Vernon; technique invented by artist Jean Crotti (1870-1958); panel assembled by "gemmists" in the studio of Roger Malherbe-Navarre. Multicolored pieces of glass; layered, fused. Included in the 1962 "Masterpieces in Glass" traveling exhibition by Pittsburgh Plate Glass Co.

Condition in 1993: Several pieces missing; fourteen large pieces and bag of bits and glue fragments arrived separately. "Glue/ enamel" flaking overall.



15)

93.3.15

Nature Nate Aux Fleurs

Gift of Pittsburgh Plate Glass Co.

Roger Bezombes (artist), Roger Malherbe-Navarre (maker), Les Gemmaux de France (studio)

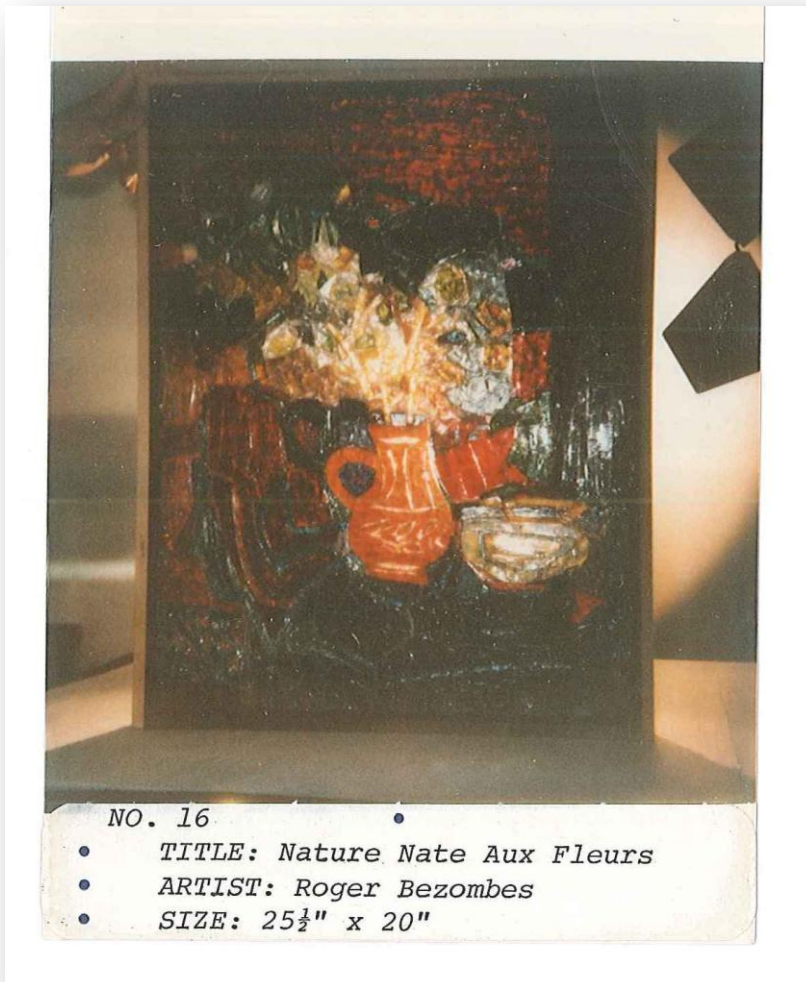
France

about 1954

Lightbox H: 80.8 cm, W: 66.5 cm, D: 26.1 cm; Panel: 25 1/2 x 20"

Gemmail panel in wood frame/ light box. Design by Roger Bezombes; technique invented by artist Jean Crotti (1870-1958); panel assembled by "gemmists" in the studio of Roger Malherbe-Navarre. Multicolored pieces of glass; layered, fused. Included in the 1962 "Masterpieces in Glass" traveling exhibition by Pittsburgh Plate Glass Co.

Condition in 1993: *Intact*



16)

68.3.28

The City of Light

Gift of Air France

Danielle d'Humes (artist), Roger Malherbe-Navarre (maker), Les Gemmaux de France (studio)

France

about 1960

About 9' W x 12' H

Gemmail panel in three sections. Air France commissioned Roger Malherbe-Navarre to create a gemmail panel for their New York ticket office. Malherbe-Navarre invited several artists to submit "cartoons" for consideration, and the work of Danielle d'Humes was chosen for the space. Danielle d'Humes was winner of the first "Prix du Gemmail" in 1957 for her gemmail work called 'Voiles'.

Condition: *Destroyed in the flood of 1972.*

